

CONTENTS

SEMICONDUCTOR SHAPES 2-2

BLOCK DIAGRAM 2-3

CIRCUIT DIAGRAMS

MAIN PWB CIRCUIT DIAGRAM 2-5

POWER & DEF PWB CIRCUIT DIAGRAM 2-9

100Hz PWB CIRCUIT DIAGRAM 2-11

MICON PWB CIRCUIT DIAGRAM 2-13

FRONT CONTROL PWB CIRCUIT DIAGRAM 2-15

CRT SOCKET PWB CIRCUIT DIAGRAM 2-17

AV SW PWB CIRCUIT DIAGRAM 2-19

DOLBY PWB CIRCUIT DIAGRAM 2-21

PATTERN DIAGRAMS

MAIN PWB PATTERN 2-25

POWER & DEF PWB PATTERN 2-27

100Hz PWB PATTERN 2-29

MICON PWB PATTERN 2-31

FRONT CONTROL PWB PATTERN 2-33

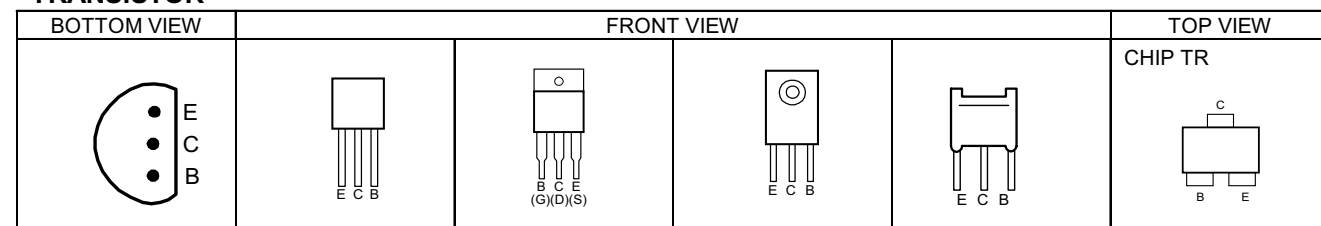
DOLBY PWB PATTERN 2-35

CRT SOCKET PWB PATTERN 2-37

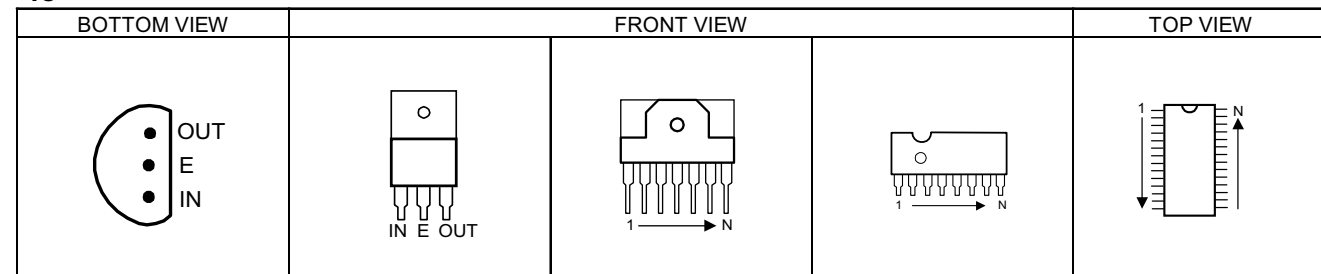
AV SW PWB PATTERN 2-38

SEMICONDUCTOR SHAPES

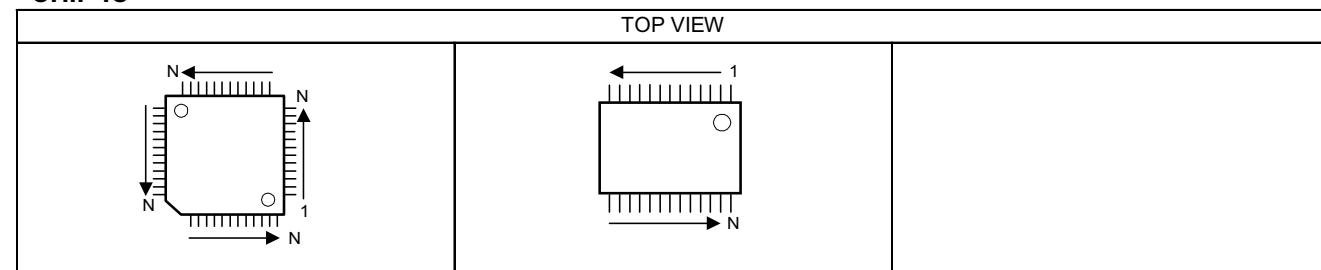
TRANSISTOR



IC



CHIP IC



STANDARD CIRCUIT DIAGRAM

NOTE ON USING CIRCUIT DIAGRAMS

1. SAFETY

The components identified by the Δ symbol and shading are critical for safety. For continued safety replace safety critical components only with manufactures recommended parts.

2.SPECIFIED VOLTAGE AND WAVEFORM VALUES

The voltage and waveform values have been measured under the following conditions.

- (1)Input signal :PAL Colour bar signal
 - (2)Setting positions of each knob/button and variable resistor :Original setting position when shipped
 - (3)Internal resistance of tester :DC 20k Ω /V
 - (4)Oscilloscope sweeping time :H \Rightarrow 20 μ S/div
:V \Rightarrow 5mS/div
:Others \Rightarrow Sweeping time is specified
 - (5)Voltage values :All DC voltage values
- * Since the voltage values of signal circuit vary to some extent according to adjustments, use them as reference values.

3.INDICATION OF PARTS SYMBOL [EXAMPLE]

●In the PW board :R1209 \rightarrow R209

4.INDICATIONS ON THE CIRCUIT DIAGRAM

(1)Resistors

- Resistance value
No unit :[Ω]
K :[K Ω]
M :[M Ω]
- Rated allowable power
No indication :1/16[W]
Others :As specified

●Type

- No indication :Carbon resistor
- OMR :Oxide metal film resistor
- MFR :Metal film resistor
- MPR :Metal plate resistor
- UNFR :Uninflammable resistor
- FR :Fusible resistor

*Composition resistor 1/2 [W] is specified as 1/2S or Comp.

(2)Capacitors

- Capacitance value
1 or higher :[pF]
less than 1 :[μ F]
- Withstand voltage
No indication :DC50[V]
AC indicated :AC withstand voltage [V]
Others :DC withstand voltage [V]

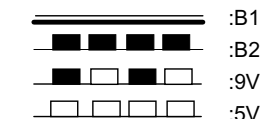
*Electrolytic Capacitors

47/50[Example]:Capacitance value [μ F]/withstand voltage[V]

- Type
No indication :Ceramic capacitor
MY :Mylar capacitor
MM :Metalized mylar capacitor
PP :Polypropylene capacitor
MPP :Metalized polypropylene capacitor
MF :Metalized film capacitor
TF :Thin film capacitor
BP :Bipolar electrolytic capacitor
TAN :Tantalum capacitor

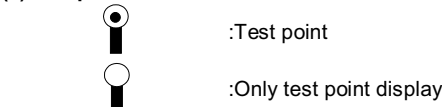
- (3)Coils
No unit :[μ H]
Others :As specified

(4)Power Supply

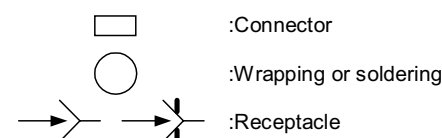


*Respective voltage values are indicated

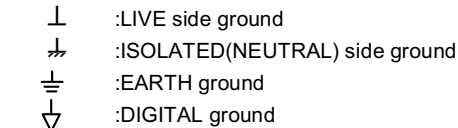
(5)Test point



(6)Connecting method



(7)Ground symbol



5.NOTE FOR REPAIRING SERVICE

This model's power circuit is partly different in the GND. The difference of the GND is shown by the LIVE (\perp) side GND and the ISOLATED(NEUTRAL) : ($\text{—}/$) side GND. Therefore, care must be taken for the following points.

- (1)Do not touch the LIVE side GND or the LIVE side GND and the ISOLATED(NEUTRAL) side GND simultaneously. If the above caution is not respected, an electric shock may be caused. Therefore, make sure that the power cord is surely removed from the receptacle when, for example, the chassis is pulled out.
- (2)Do not short between the LIVE side GND and ISOLATED(NEUTRAL) side GND or never measure with a measuring apparatus (oscilloscope, etc.) the LIVE side GND and ISOLATED(NEUTRAL) side GND at the same time. If the above precaution is not respected , a fuse or any parts will be broken.

◇ Since the circuit diagram is a standard one, the circuit and circuit constants may be subject to change for improvement without any notice.

When ordering parts, please use the numbers that appear in the Parts List.

CONTENTS

SEMICONDUCTOR SHAPES 2-2

BLOCK DIAGRAM 2-3

CIRCUIT DIAGRAMS

MAIN PWB CIRCUIT DIAGRAM 2-5

POWER & DEF PWB CIRCUIT DIAGRAM 2-9

100Hz PWB CIRCUIT DIAGRAM 2-11

MICON PWB CIRCUIT DIAGRAM 2-13

FRONT CONTROL PWB CIRCUIT DIAGRAM 2-15

CRT SOCKET PWB CIRCUIT DIAGRAM 2-17

AV SW PWB CIRCUIT DIAGRAM 2-19

DOLBY PWB CIRCUIT DIAGRAM 2-21

PATTERN DIAGRAMS

MAIN PWB PATTERN 2-25

POWER & DEF PWB PATTERN 2-27

100Hz PWB PATTERN 2-29

MICON PWB PATTERN 2-31

FRONT CONTROL PWB PATTERN 2-33

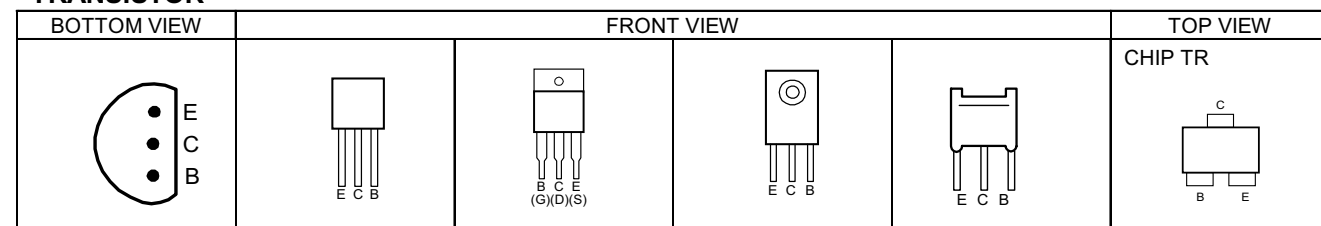
DOLBY PWB PATTERN 2-35

CRT SOCKET PWB PATTERN 2-37

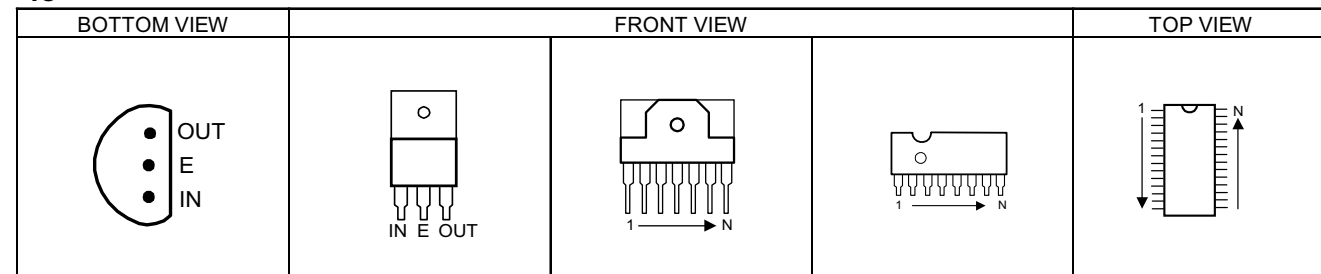
AV SW PWB PATTERN 2-38

SEMICONDUCTOR SHAPES

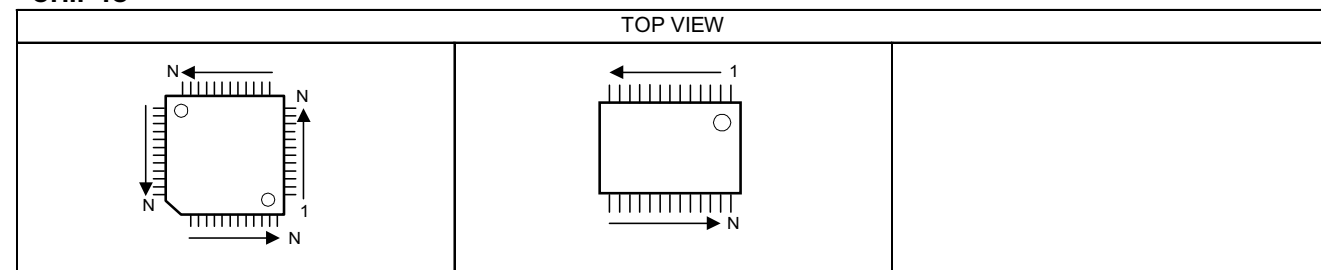
TRANSISTOR



IC



CHIP IC



STANDARD CIRCUIT DIAGRAM

NOTE ON USING CIRCUIT DIAGRAMS

1. SAFETY

The components identified by the Δ symbol and shading are critical for safety. For continued safety replace safety critical components only with manufactures recommended parts.

2.SPECIFIED VOLTAGE AND WAVEFORM VALUES

The voltage and waveform values have been measured under the following conditions.

- (1)Input signal :PAL Colour bar signal
 - (2)Setting positions of each knob/button and variable resistor :Original setting position when shipped
 - (3)Internal resistance of tester :DC 20k Ω /V
 - (4)Oscilloscope sweeping time :H \Rightarrow 20 μ S/div
:V \Rightarrow 5mS/div
:Others \Rightarrow Sweeping time is specified
 - (5)Voltage values :All DC voltage values
- * Since the voltage values of signal circuit vary to some extent according to adjustments, use them as reference values.

3.INDICATION OF PARTS SYMBOL [EXAMPLE]

●In the PW board :R1209 \rightarrow R209

4.INDICATIONS ON THE CIRCUIT DIAGRAM

(1)Resistors

- Resistance value
No unit :[Ω]
K :[K Ω]
M :[M Ω]
- Rated allowable power
No indication :1/16[W]
Others :As specified

●Type

- No indication :Carbon resistor
- OMR :Oxide metal film resistor
- MFR :Metal film resistor
- MPR :Metal plate resistor
- UNFR :Uninflammable resistor
- FR :Fusible resistor

*Composition resistor 1/2 [W] is specified as 1/2S or Comp.

(2)Capacitors

- Capacitance value
1 or higher :[pF]
less than 1 :[μ F]
- Withstand voltage
No indication :DC50[V]
AC indicated :AC withstand voltage [V]
Others :DC withstand voltage [V]

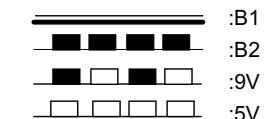
*Electrolytic Capacitors

47/50[Example]:Capacitance value [μ F]/withstand voltage[V]

- Type
No indication :Ceramic capacitor
MY :Mylar capacitor
MM :Metalized mylar capacitor
PP :Polypropylene capacitor
MPP :Metalized polypropylene capacitor
MF :Metalized film capacitor
TF :Thin film capacitor
BP :Bipolar electrolytic capacitor
TAN :Tantalum capacitor

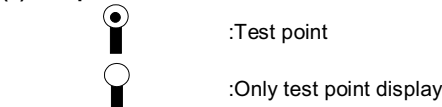
- (3)Coils
No unit :[μ H]
Others :As specified

(4)Power Supply

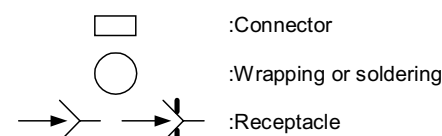


*Respective voltage values are indicated

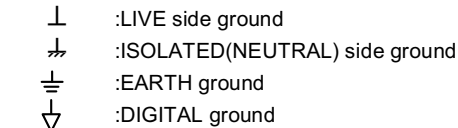
(5)Test point



(6)Connecting method



(7)Ground symbol



5.NOTE FOR REPAIRING SERVICE

This model's power circuit is partly different in the GND. The difference of the GND is shown by the LIVE (\perp) side GND and the ISOLATED(NEUTRAL) : (\neq) side GND. Therefore, care must be taken for the following points.

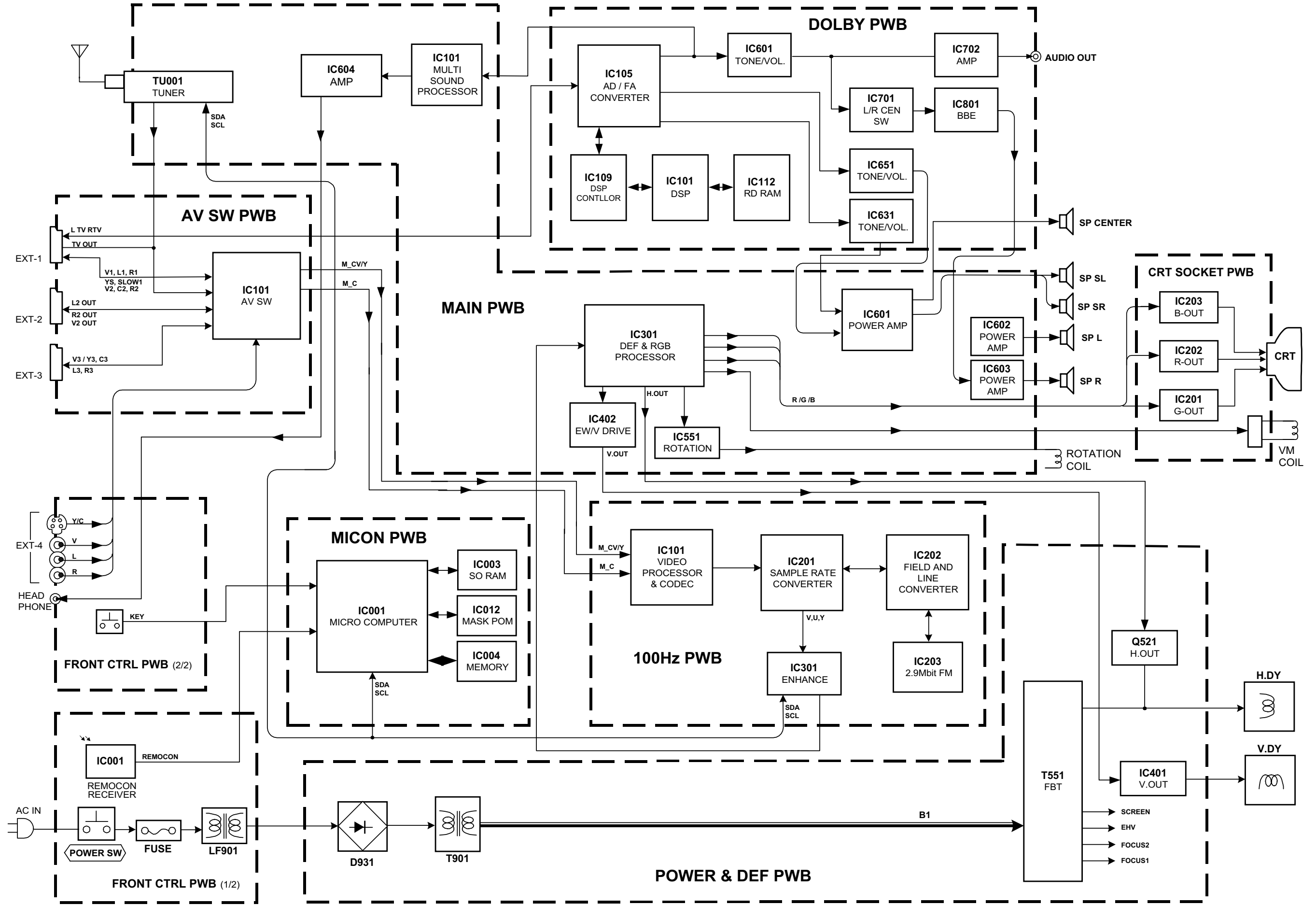
(1)Do not touch the LIVE side GND or the LIVE side GND and the ISOLATED(NEUTRAL) side GND simultaneously. If the above caution is not respected, an electric shock may be caused. Therefore, make sure that the power cord is surely removed from the receptacle when, for example, the chassis is pulled out.

(2)Do not short between the LIVE side GND and ISOLATED(NEUTRAL) side GND or never measure with a measuring apparatus (oscilloscope, etc.) the LIVE side GND and ISOLATED(NEUTRAL) side GND at the same time. If the above precaution is not respected , a fuse or any parts will be broken.

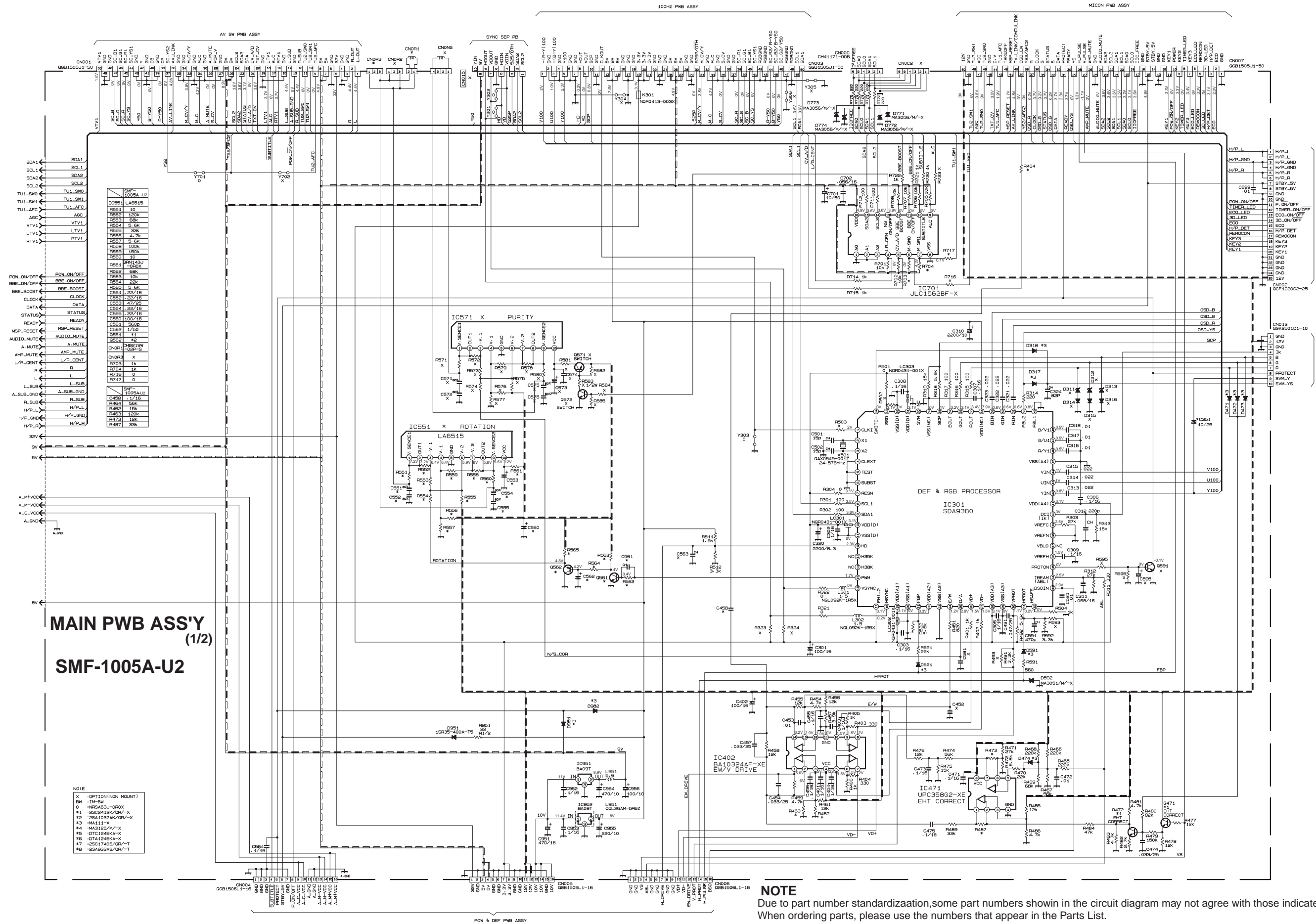
◇ Since the circuit diagram is a standard one, the circuit and circuit constants may be subject to change for improvement without any notice.

When ordering parts, please use the numbers that appear in the Parts List.

BLOCK DIAGRAM

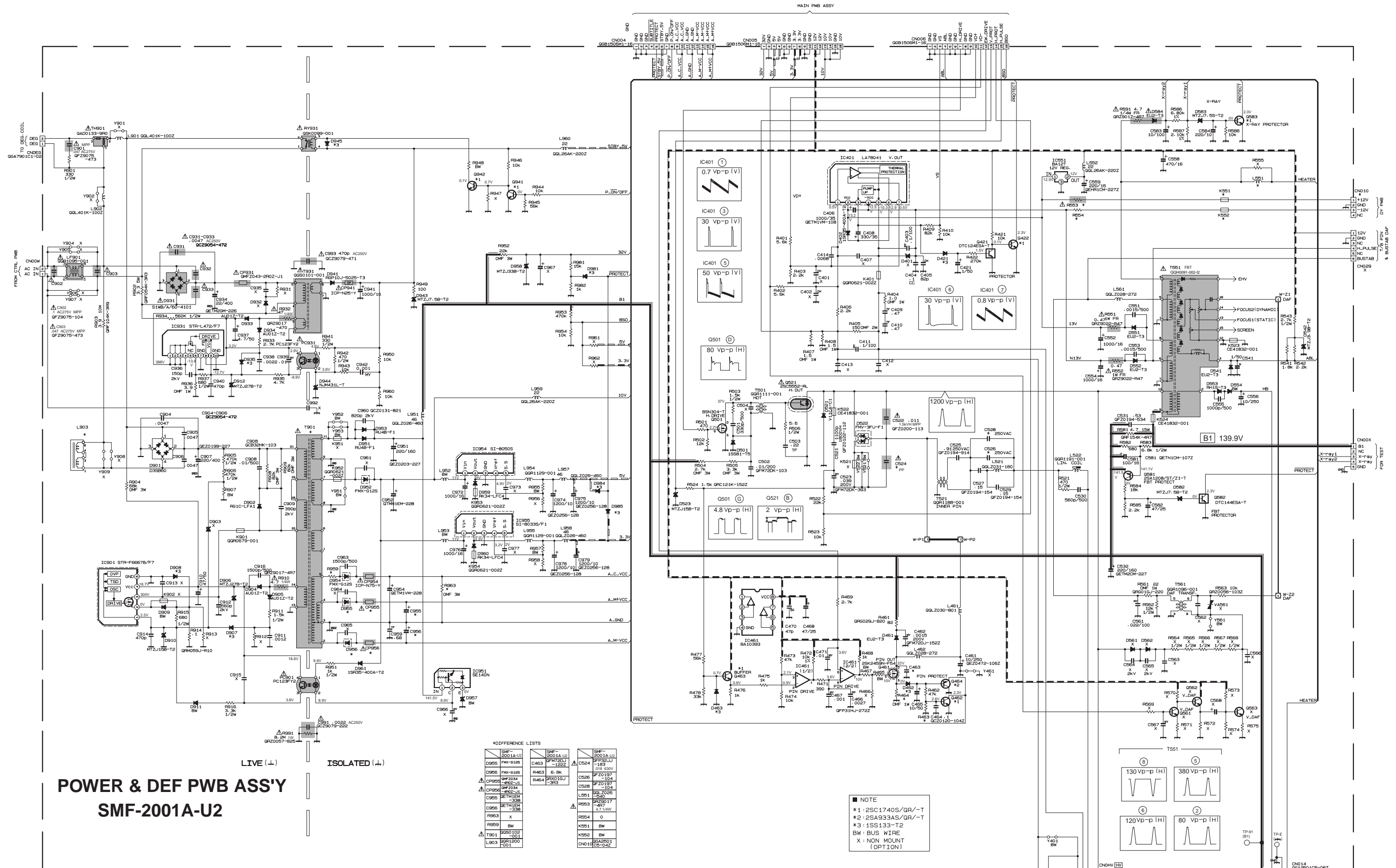


CIRCUIT DIAGRAMS MAIN PWB CIRCUIT DIAGRAM



NOTE
 Due to part number standardization, some part numbers shown in the circuit diagram may not agree with those indicated in the parts list. When ordering parts, please use the numbers that appear in the Parts List.

POWER & DEF PWB CIRCUIT DIAGRAM



**POWER & DEF PWB ASS'Y
SMF-2001A-U2**

LIVE (⊥) ISOLATED (⊥)

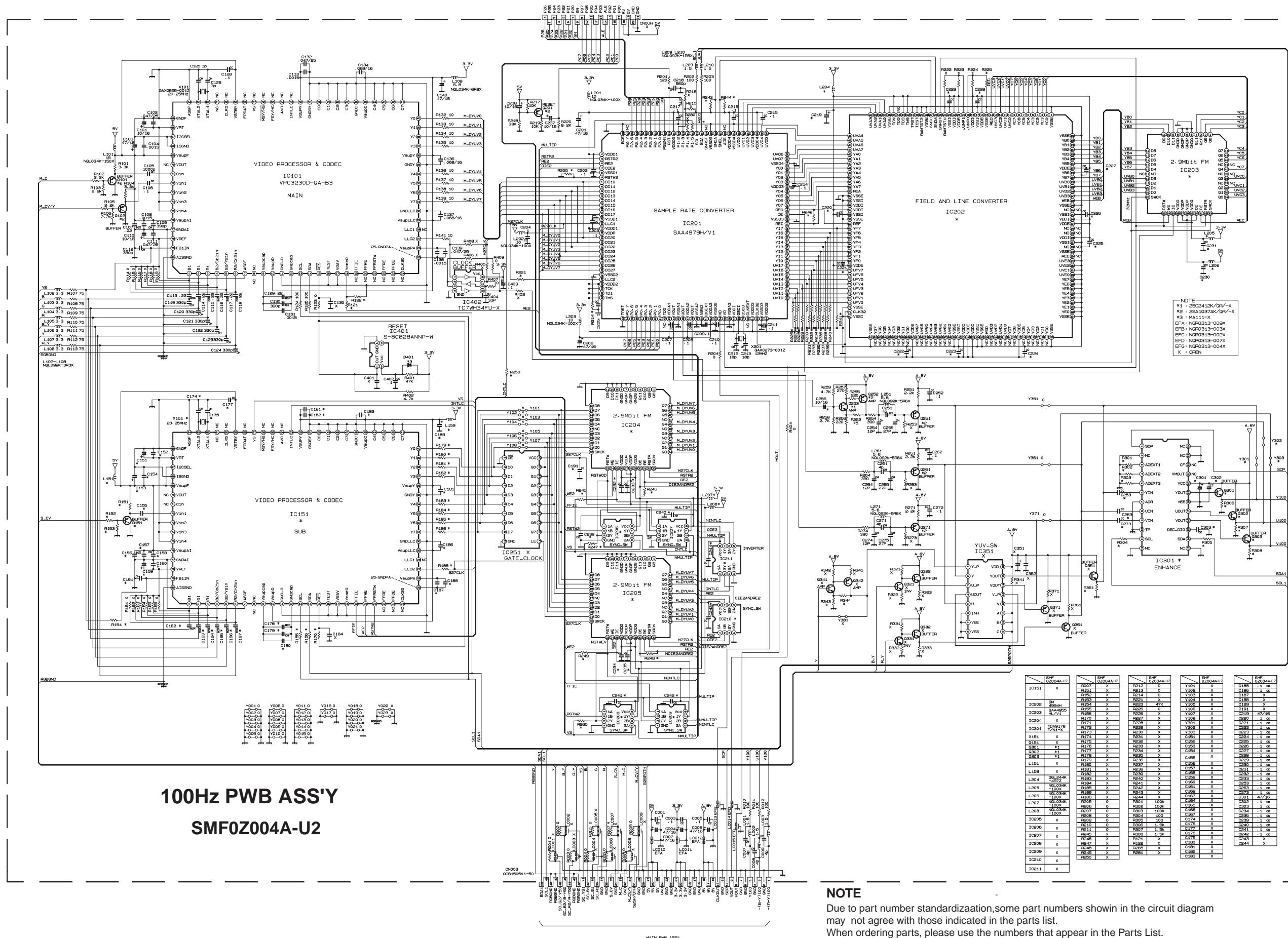
***DIFFERENCE LISTS**

SMF-2001A U2	SMF-2001A U2	SMF-2001A U2
D955 FMX-9128	C463 QF70197	C524 QF70197
D956 FMX-9128	R463 E.BK	C526 QF70197
CP955 QF2034	R464 BRX01GJ	C528 QF70197
CP956 QF2034	R465 -3R3	C529 QF70197
CP957 QF2034		C530 QF70197
CP958 QF2034		C531 QF70197
CP959 QF2034		C532 QF70197
CP960 QF2034		C533 QF70197
CP961 QF2034		C534 QF70197
CP962 QF2034		C535 QF70197
CP963 QF2034		C536 QF70197
CP964 QF2034		C537 QF70197
CP965 QF2034		C538 QF70197
CP966 QF2034		C539 QF70197
CP967 QF2034		C540 QF70197
CP968 QF2034		C541 QF70197
CP969 QF2034		C542 QF70197
CP970 QF2034		C543 QF70197
CP971 QF2034		C544 QF70197
CP972 QF2034		C545 QF70197
CP973 QF2034		C546 QF70197
CP974 QF2034		C547 QF70197
CP975 QF2034		C548 QF70197
CP976 QF2034		C549 QF70197
CP977 QF2034		C550 QF70197
CP978 QF2034		C551 QF70197
CP979 QF2034		C552 QF70197
CP980 QF2034		C553 QF70197
CP981 QF2034		C554 QF70197
CP982 QF2034		C555 QF70197
CP983 QF2034		C556 QF70197
CP984 QF2034		C557 QF70197
CP985 QF2034		C558 QF70197
CP986 QF2034		C559 QF70197
CP987 QF2034		C560 QF70197
CP988 QF2034		C561 QF70197
CP989 QF2034		C562 QF70197
CP990 QF2034		C563 QF70197
CP991 QF2034		C564 QF70197
CP992 QF2034		C565 QF70197
CP993 QF2034		C566 QF70197
CP994 QF2034		C567 QF70197
CP995 QF2034		C568 QF70197
CP996 QF2034		C569 QF70197
CP997 QF2034		C570 QF70197
CP998 QF2034		C571 QF70197
CP999 QF2034		C572 QF70197
CP1000 QF2034		C573 QF70197

NOTE
 *1 : 2SC1740S/QR/-T
 *2 : 2SA933AS/QR/-T
 *3 : 1SS133-T
 BW : BUS WIRE
 X : NON MOUNT (OPTION)

NOTE
 Due to part number standardization, some part numbers shown in the circuit diagram may not agree with those indicated in the parts list. When ordering parts, please use the numbers that appear in the Parts List.

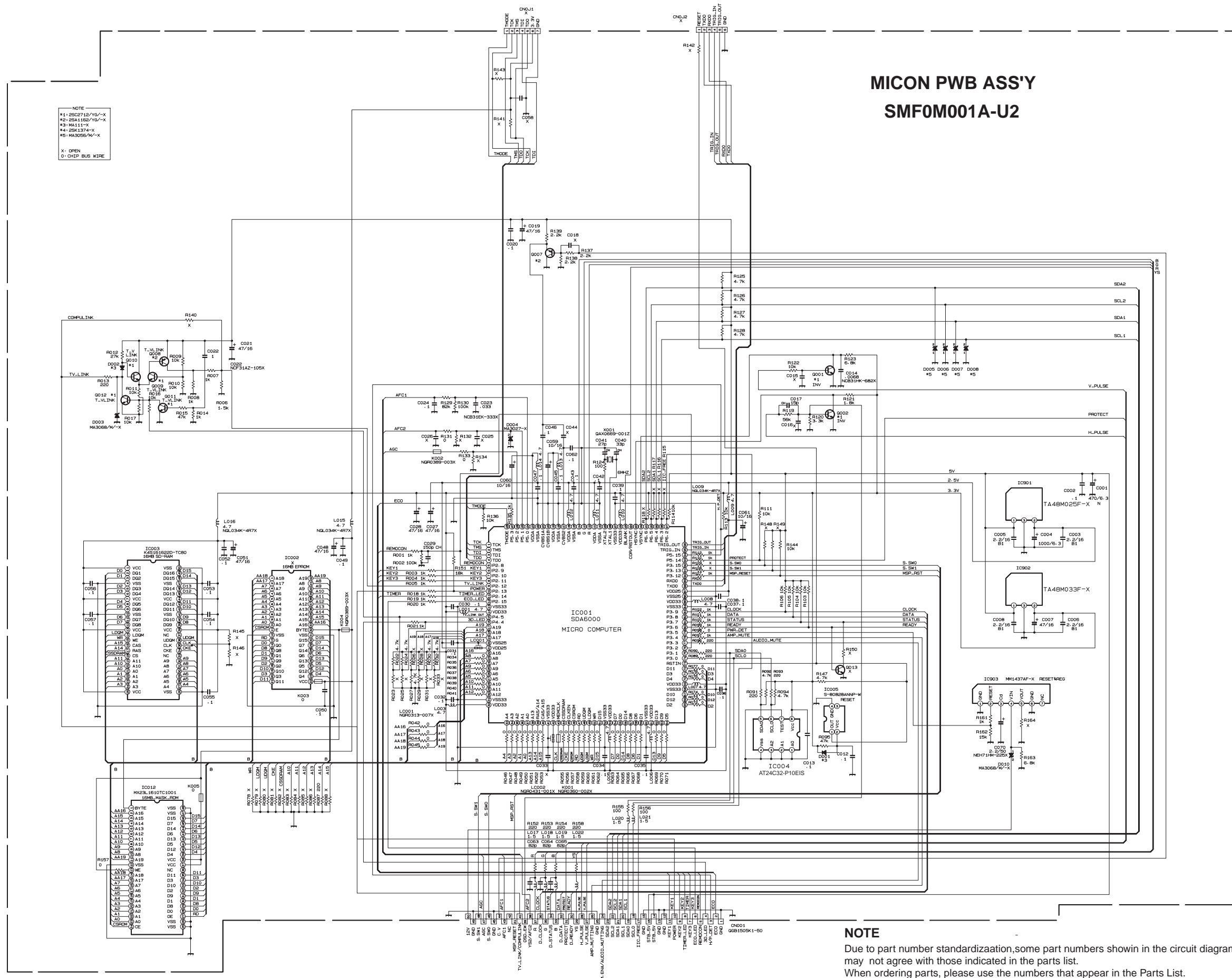
100Hz PWB CIRCUIT DIAGRAM



MICON PWB CIRCUIT DIAGRAM

MICON PWB ASS'Y
SMF0M001A-U2

NOTE
 #1-25C271B/YG/-X
 #2-25A118B/YG/-X
 #3-MA1111-X
 #4-25K137A-X
 #5-MA3056/M/-X
 X: OPEN
 O: CHIP BUS WIRE

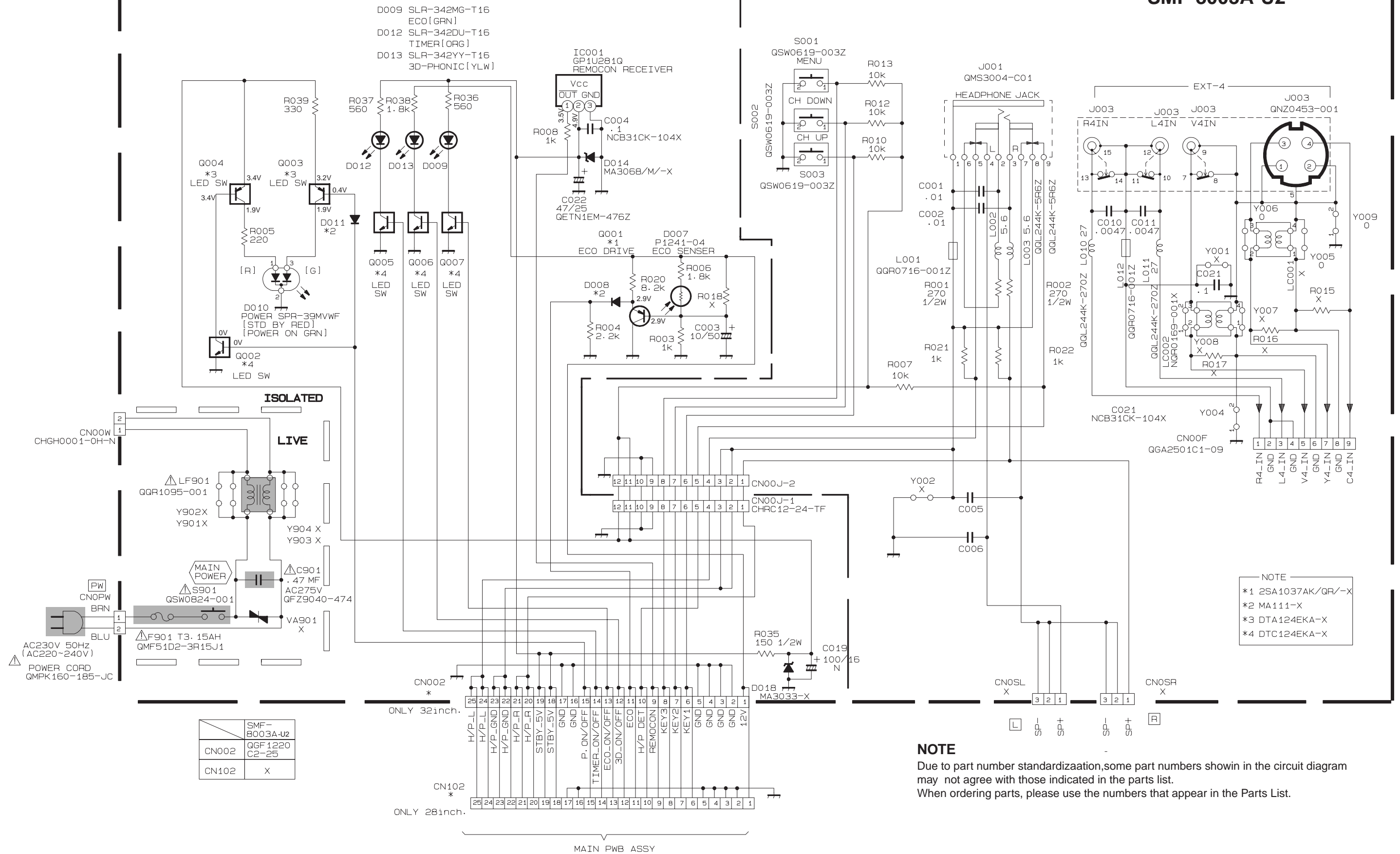


NOTE
 Due to part number standardization, some part numbers shown in the circuit diagram may not agree with those indicated in the parts list.
 When ordering parts, please use the numbers that appear in the Parts List.

FRONT CONTROL CIRCUIT DIAGRAM

FRONT CONTRL PWB ASS'Y

SMF-8003A-U2



	SMF-8003A-U2
CN002	QGF1220 C2-25
CN102	X

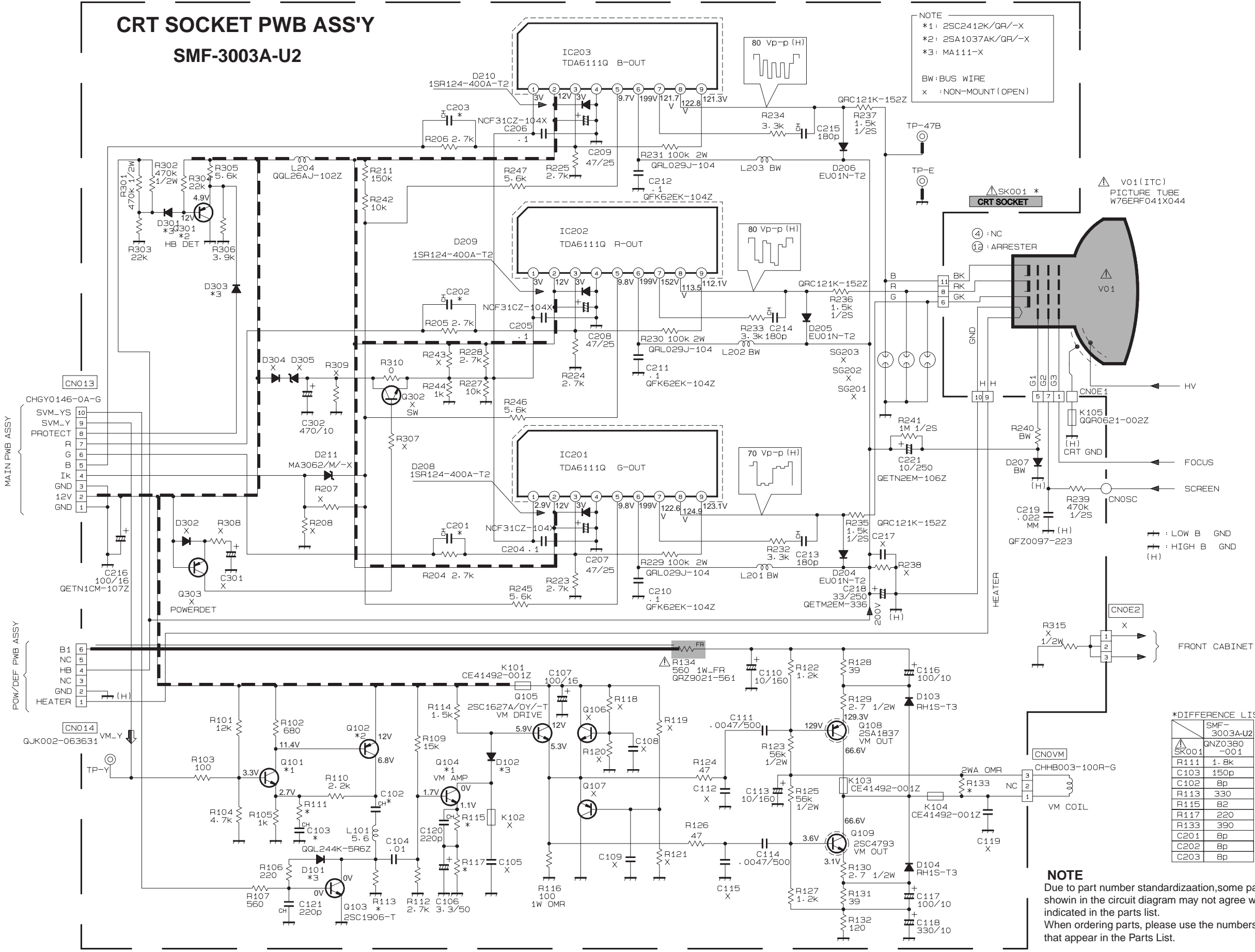
- NOTE
- *1 2SA1037AK/QR/-X
 - *2 MA111-X
 - *3 DTA124EKA-X
 - *4 DTC124EKA-X

NOTE
 Due to part number standardization, some part numbers shown in the circuit diagram may not agree with those indicated in the parts list. When ordering parts, please use the numbers that appear in the Parts List.

CRT SOCKET PWB CIRCUIT DIAGRAM

CRT SOCKET PWB ASS'Y
SMF-3003A-U2

NOTE
 *1: 2SC2412K/QR/-X
 *2: 2SA1037AK/QR/-X
 *3: MA111-X
 BW: BUS WIRE
 X : NON-MOUNT (OPEN)



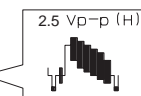
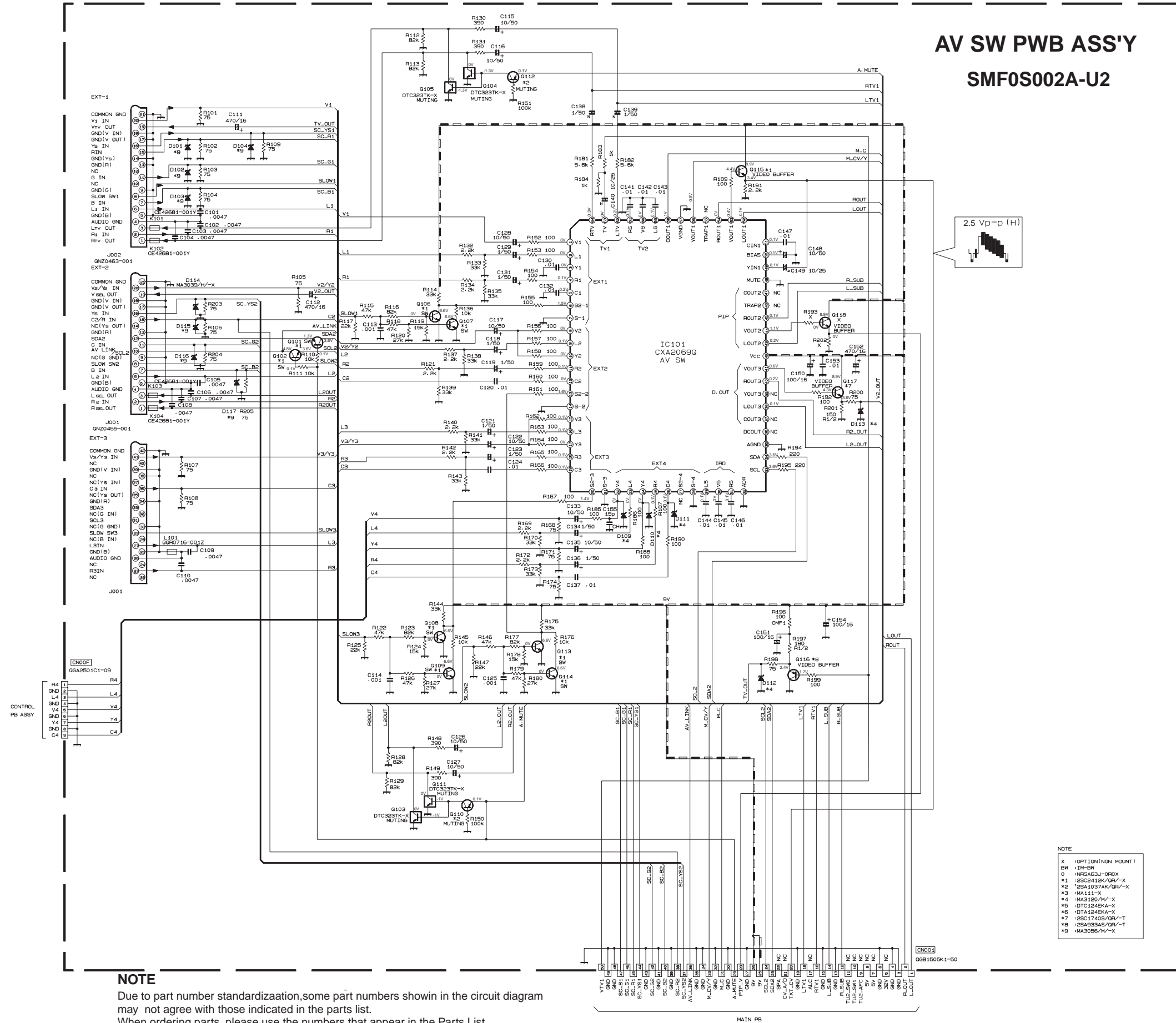
*DIFFERENCE LISTS

Part No.	SMF-3003A-U2	GNZ0380
SK001	-001	
R111	1.8k	
C103	150p	
C102	8p	
R113	330	
R115	82	
R117	220	
R133	390	
C201	8p	
C202	8p	
C203	8p	

NOTE
 Due to part number standardization, some part numbers shown in the circuit diagram may not agree with those indicated in the parts list.
 When ordering parts, please use the numbers that appear in the Parts List.

AV SW PWB CIRCUIT DIAGRAM

AV SW PWB ASS'Y
SMF0S002A-U2

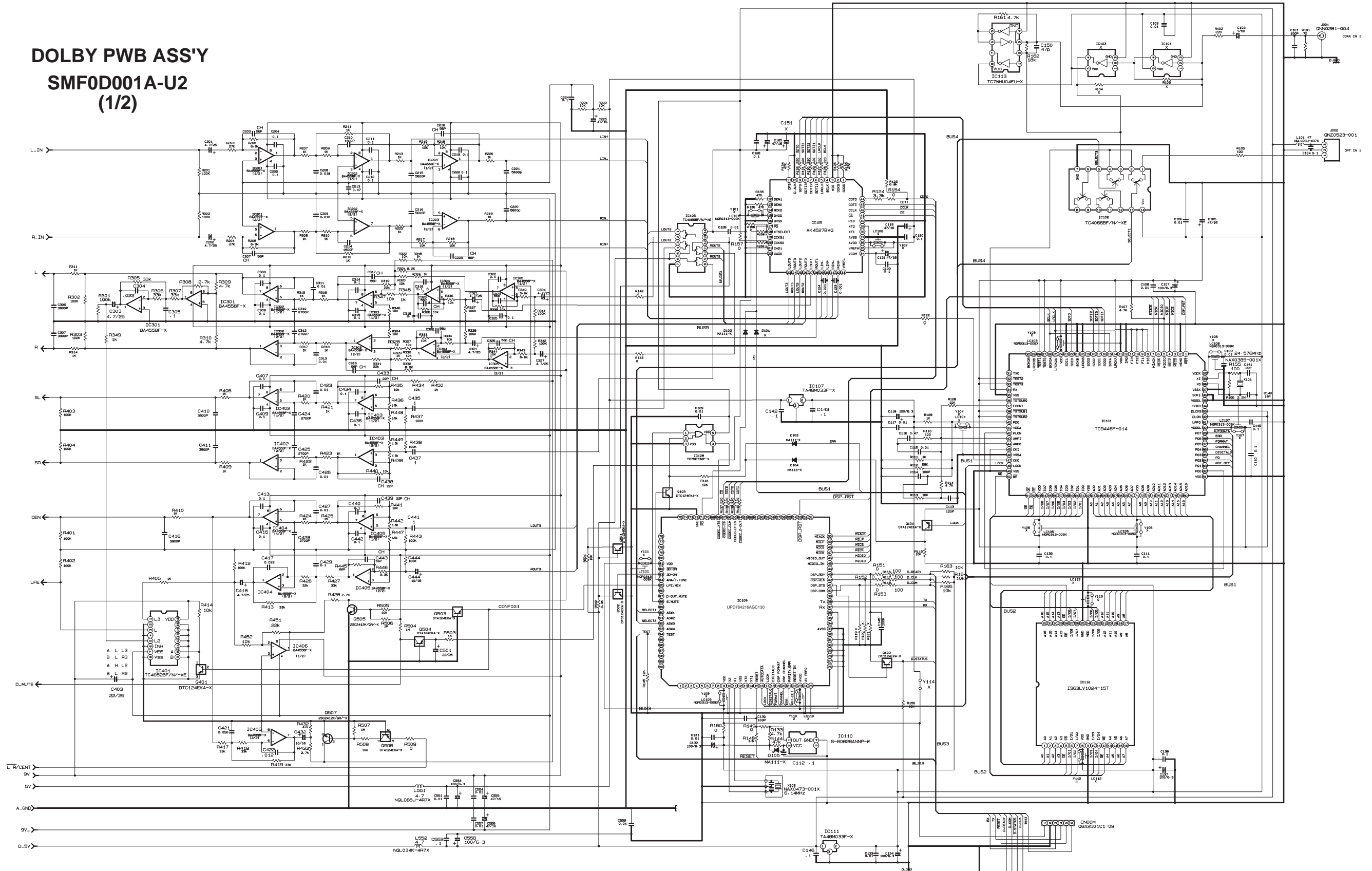


- NOTE
- X (OPTION(NON MOUNT))
 - SW 124-SW
 - 0 NRSAB3J-OROX
 - #1 2SC2412K/GR/-X
 - #2 2SA1037AK/GR/-X
 - #3 MA1111-X
 - #4 MA3120/M/-X
 - #5 DTC124KA-X
 - #6 DTA124KA-X
 - #7 2SC1740S/GR/-T
 - #8 2SA933AS/GR/-T
 - #9 MA3056/M/-X

NOTE
 Due to part number standardization, some part numbers shown in the circuit diagram may not agree with those indicated in the parts list.
 When ordering parts, please use the numbers that appear in the Parts List.

DOLBY CIRCUIT DIAGRAM

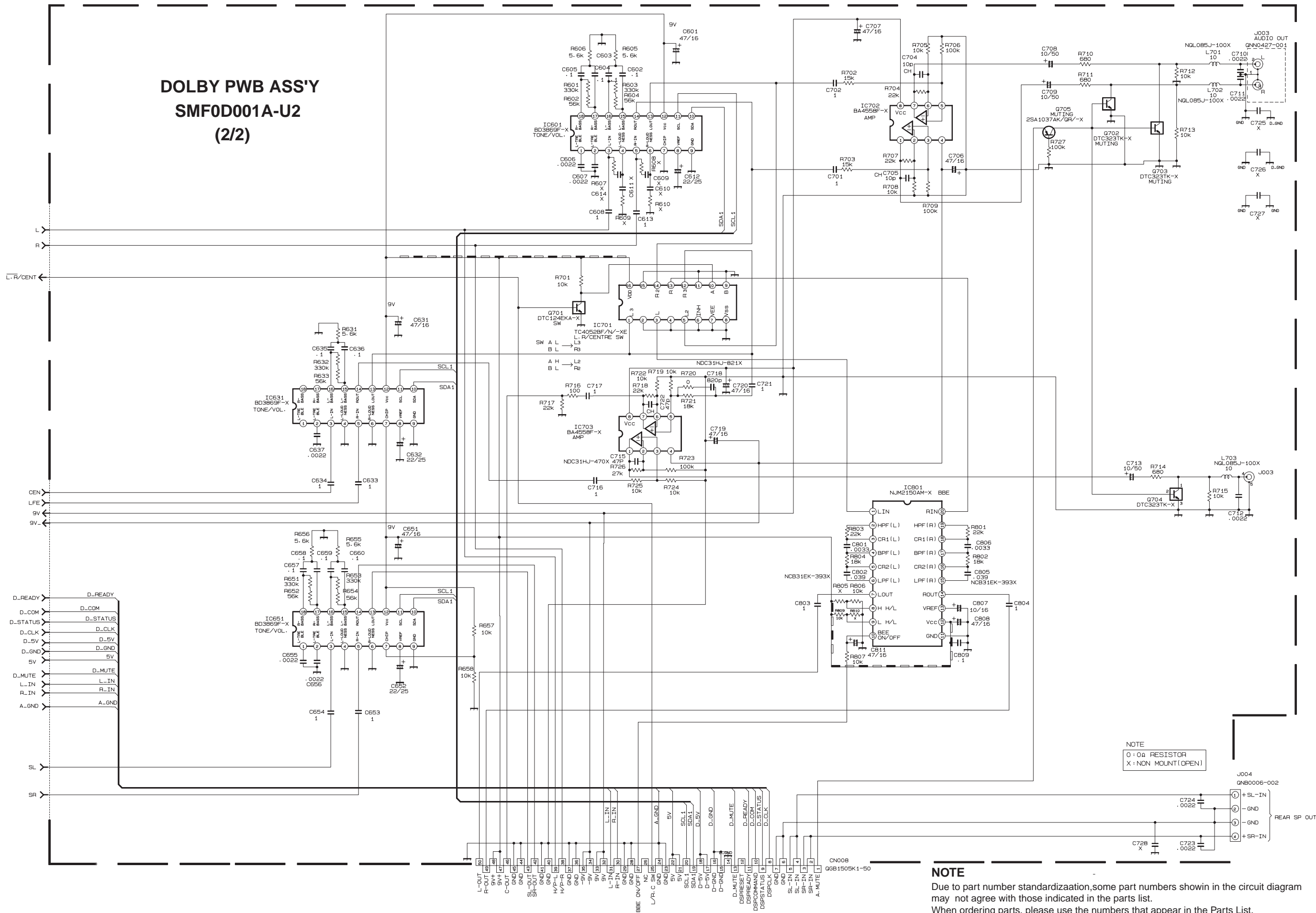
DOLBY PWB ASS'Y
SMF0D001A-U2
(1/2)



NOTE

Due to part number standardization, some part numbers shown in the circuit diagram may not agree with those indicated in the parts list. When ordering parts, please use the numbers that appear in the Parts List.

DOLBY PWB ASS'Y SMF0D001A-U2 (2/2)

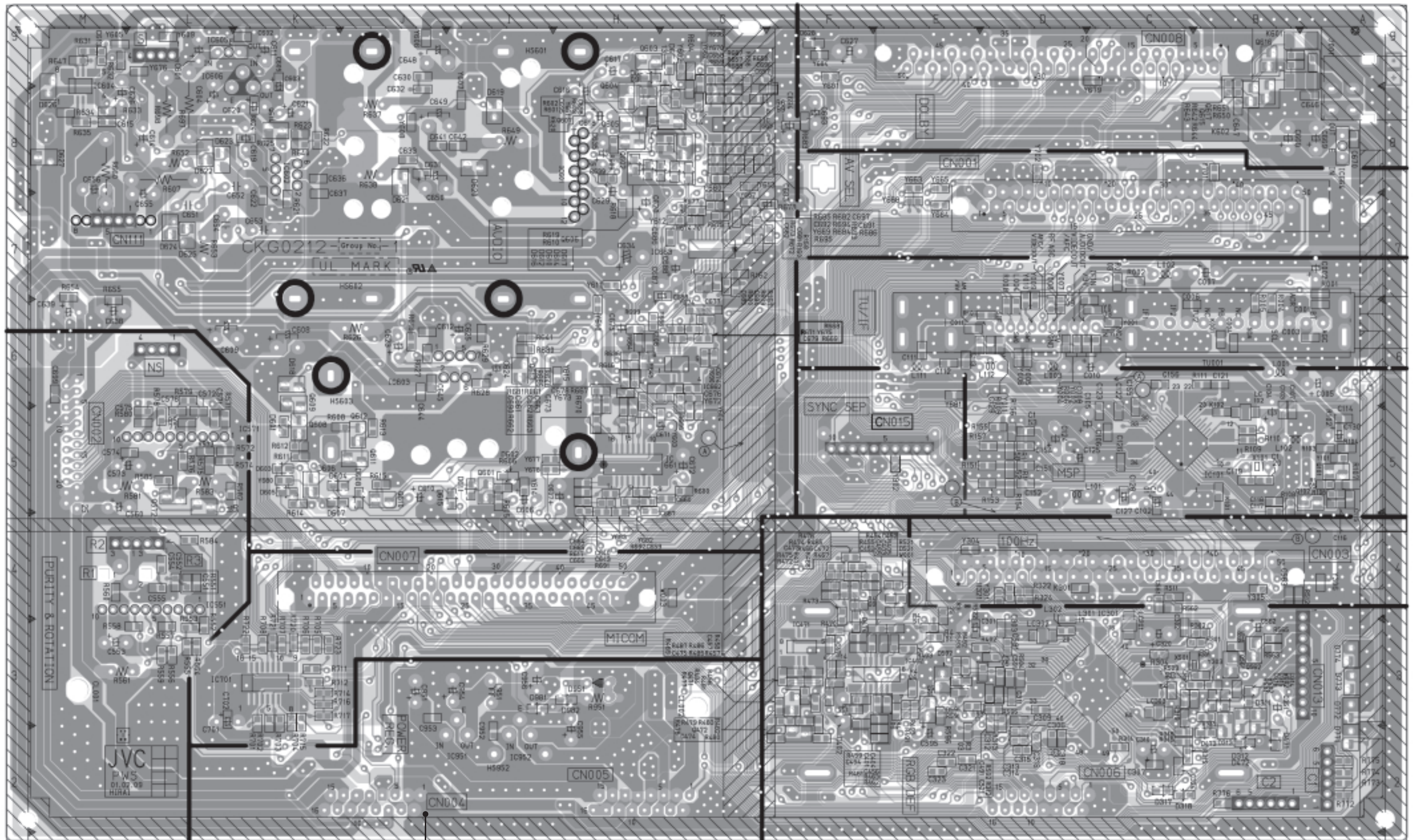


NOTE
 0 : 0Ω RESISTOR
 X : NON MOUNT (OPEN)

NOTE
 Due to part number standardization, some part numbers shown in the circuit diagram may not agree with those indicated in the parts list. When ordering parts, please use the numbers that appear in the Parts List.

PATTERN DIAGRAMS MAIN PWB PATTERN

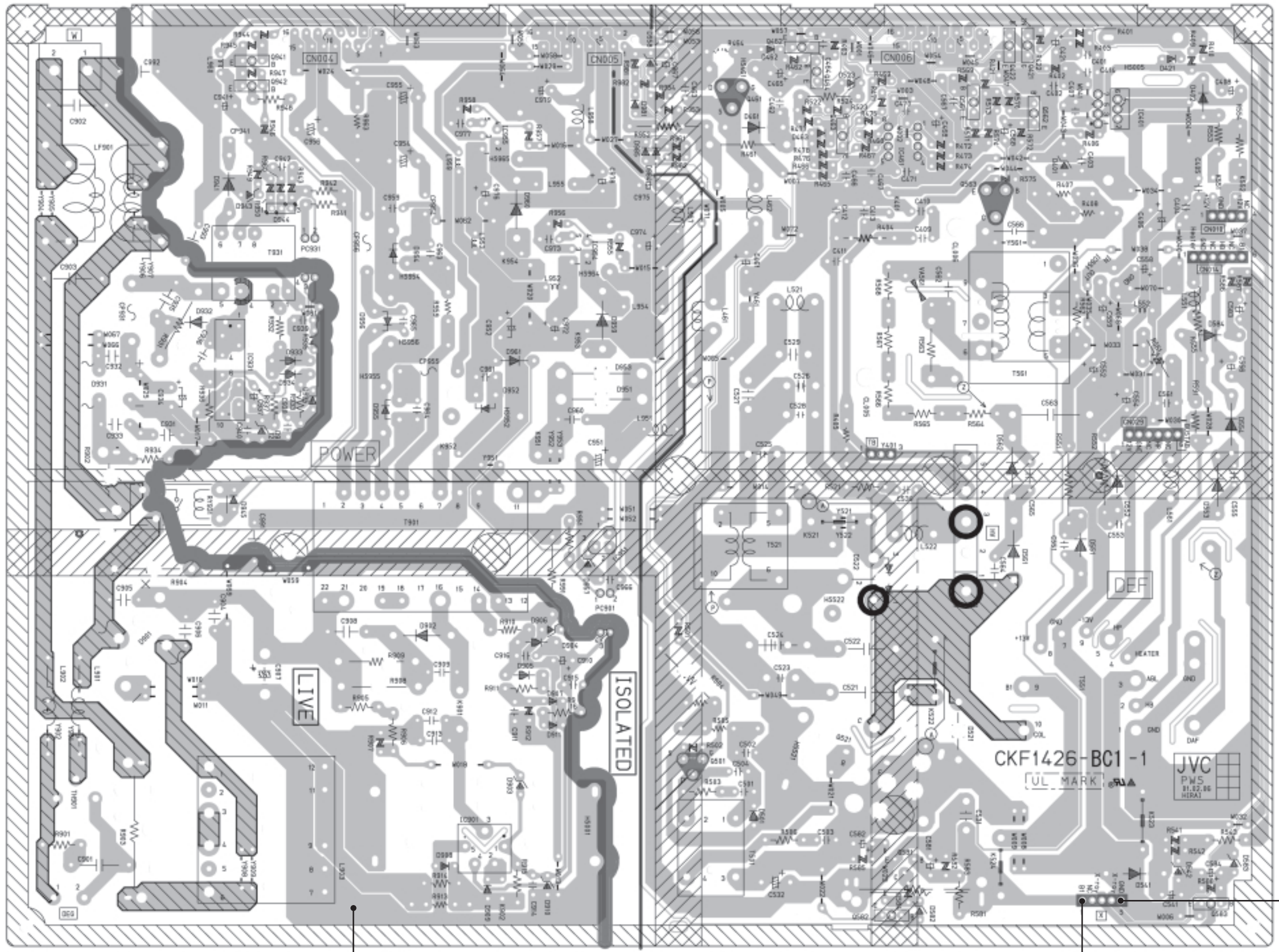
← FRONT



(77)

POWER & DEF PWB PATTERN

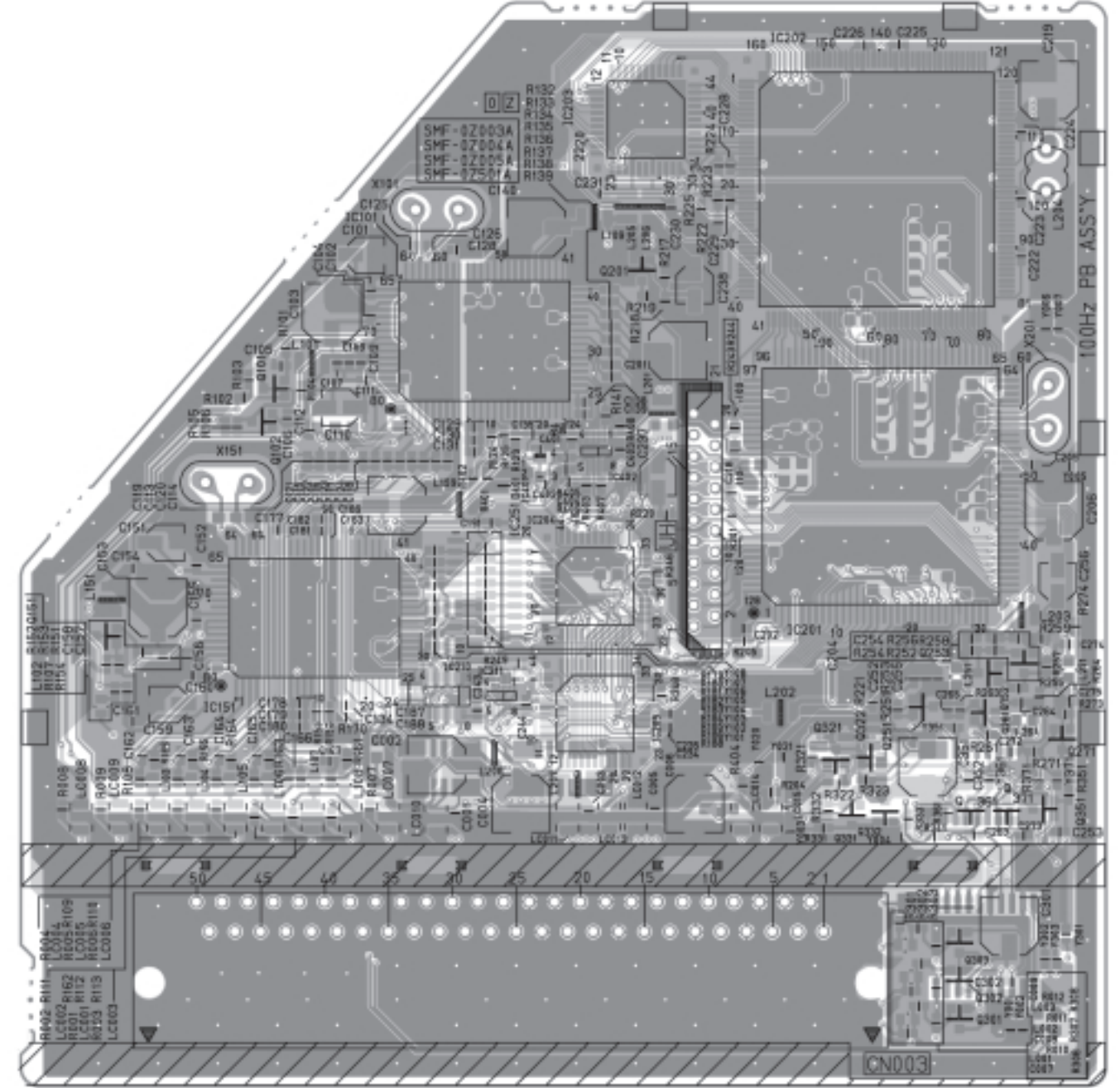
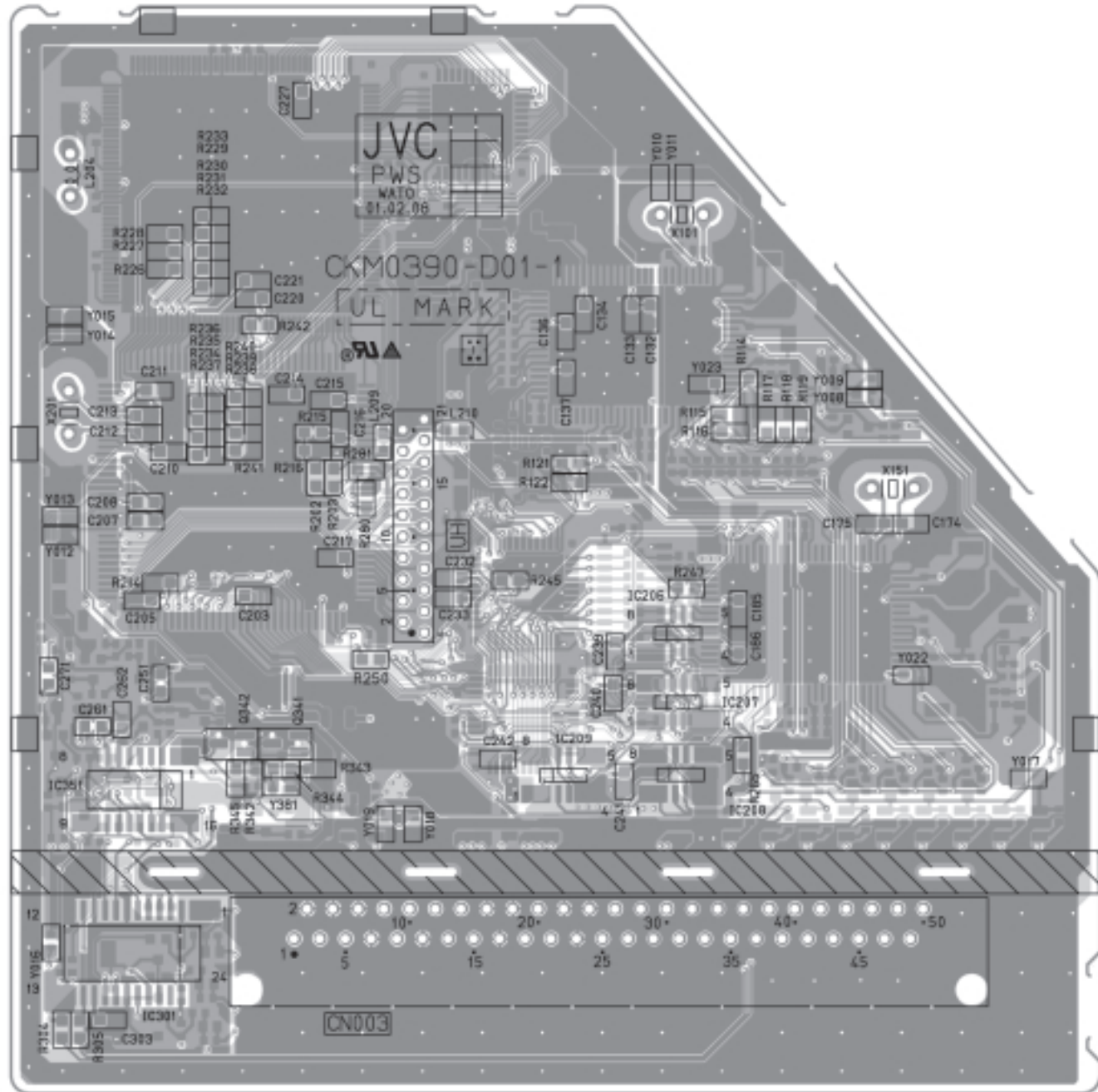
FRONT



CKF1426-BC1-1
 UL MARK
 JVC
 PWS
 91.02.86
 HERAI

100Hz PWB PATTERN (SOLDER SIDE)

100Hz PWB PATTERN (PARTS SIDE)

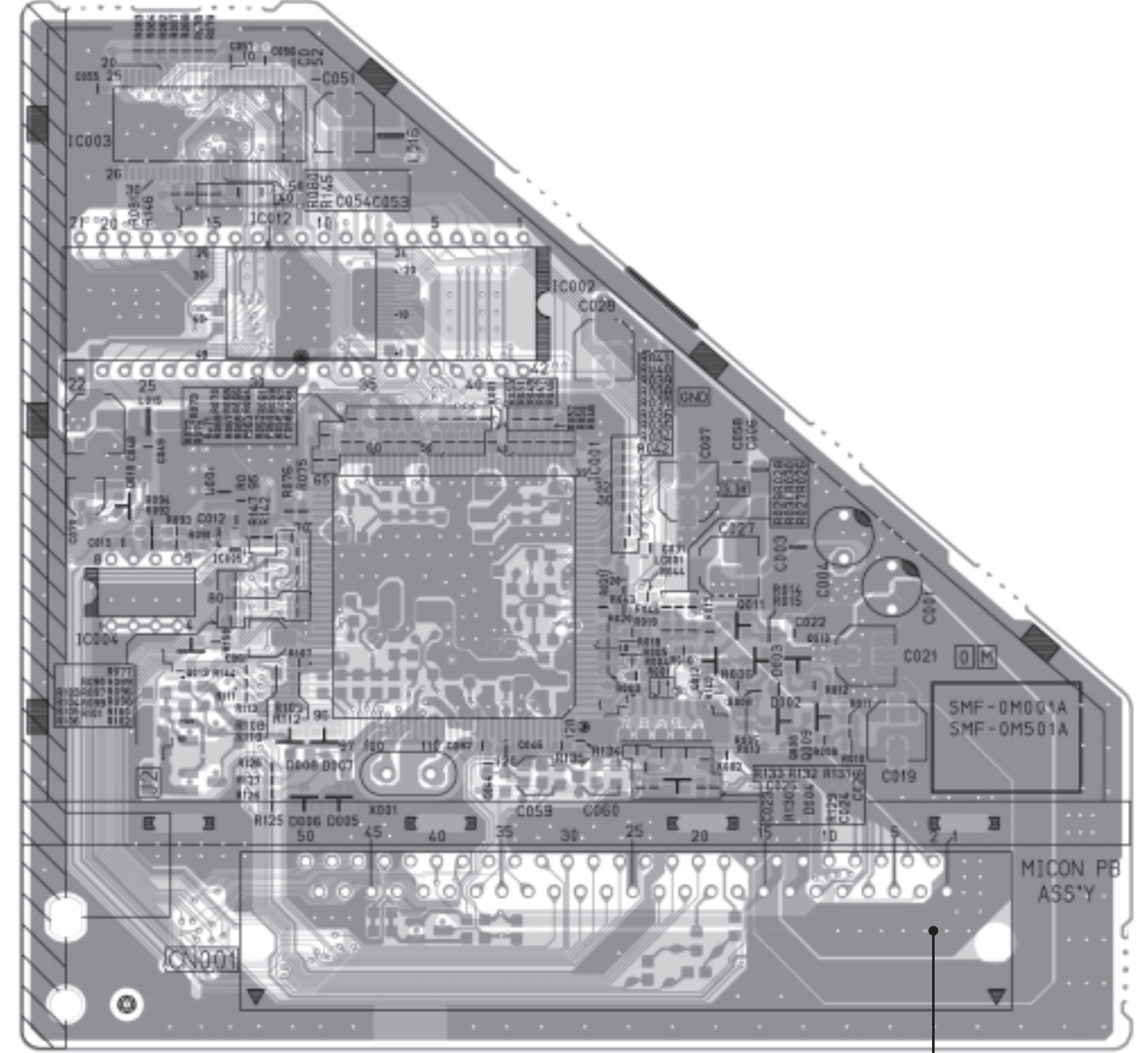
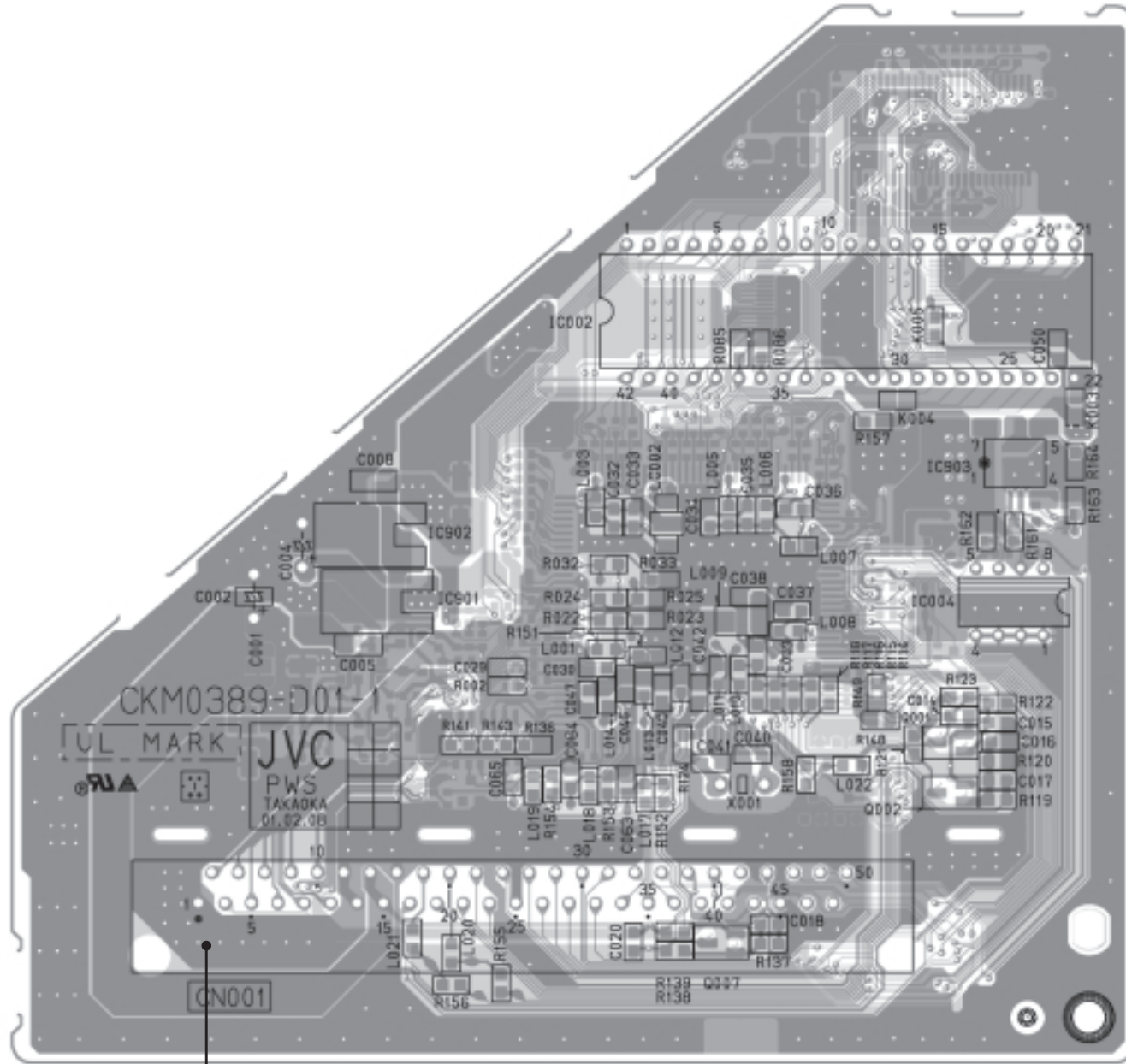


MICON PWB PATTERN (SOLDER SIDE)

MICON PWB PATTERN (PARTS SIDE)

↑ TOP

↑ TOP

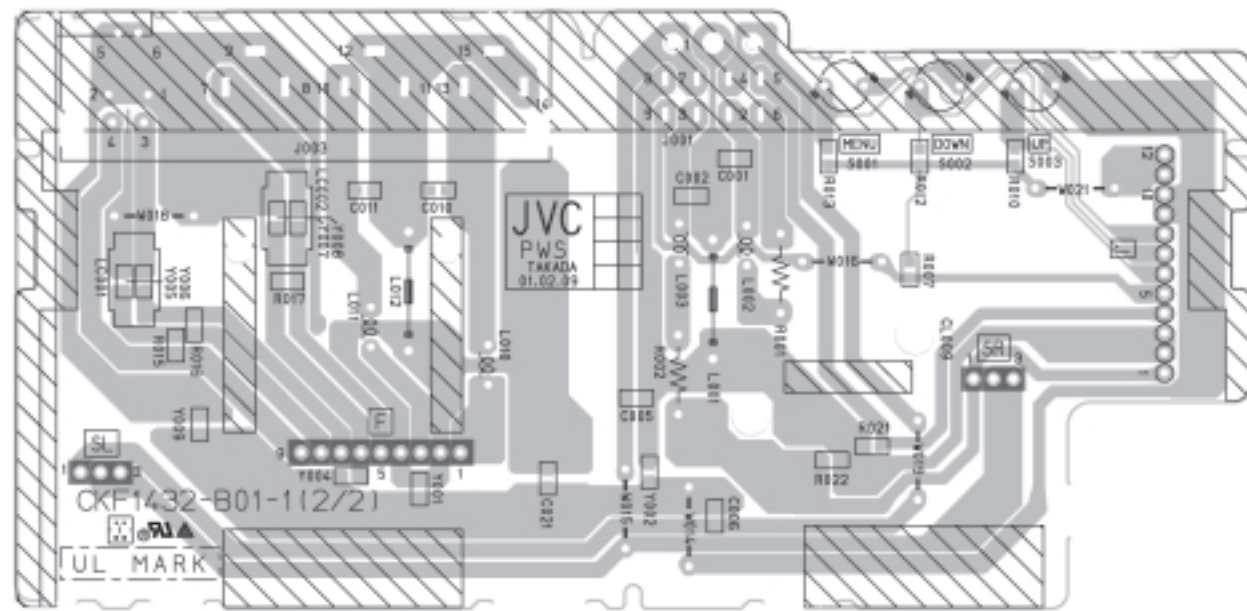


(M)

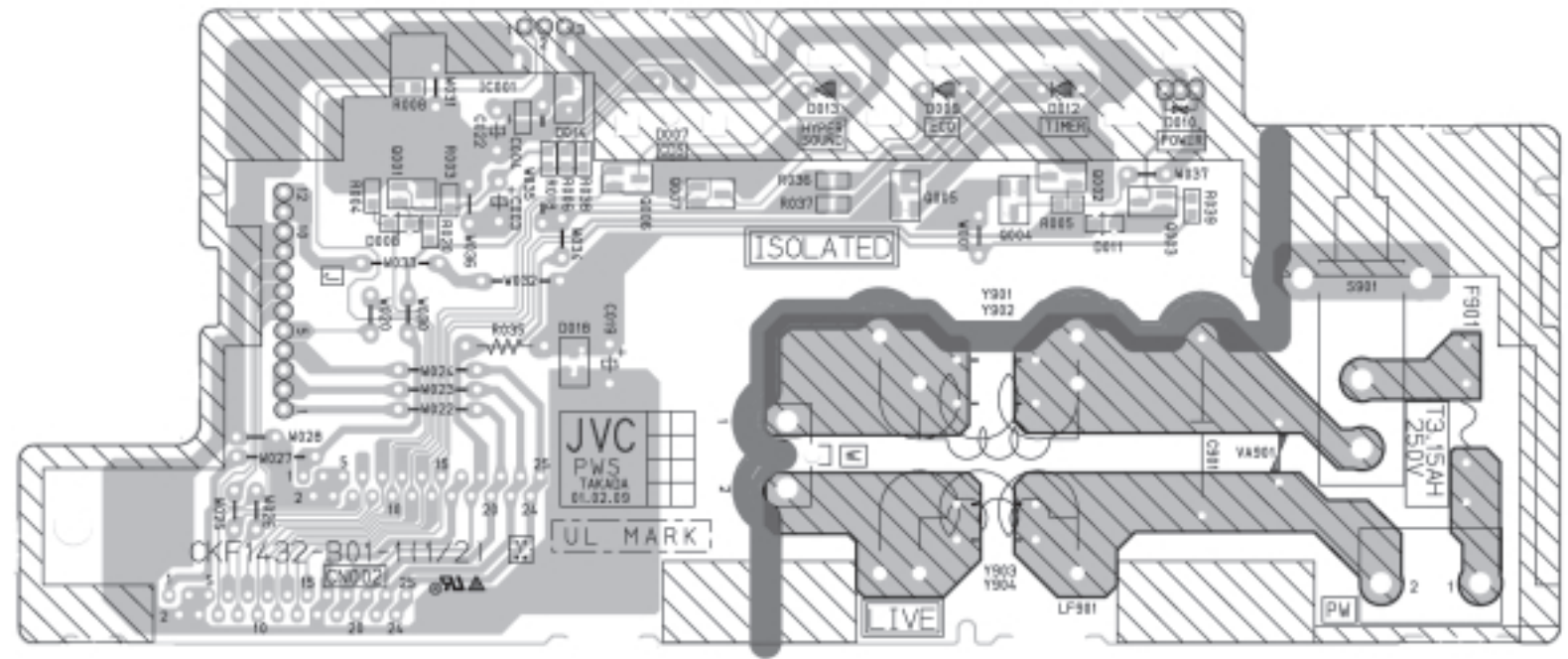
(M)

FRONT CONTROL PWB PATTERN

↑ FRONT



↑ FRONT

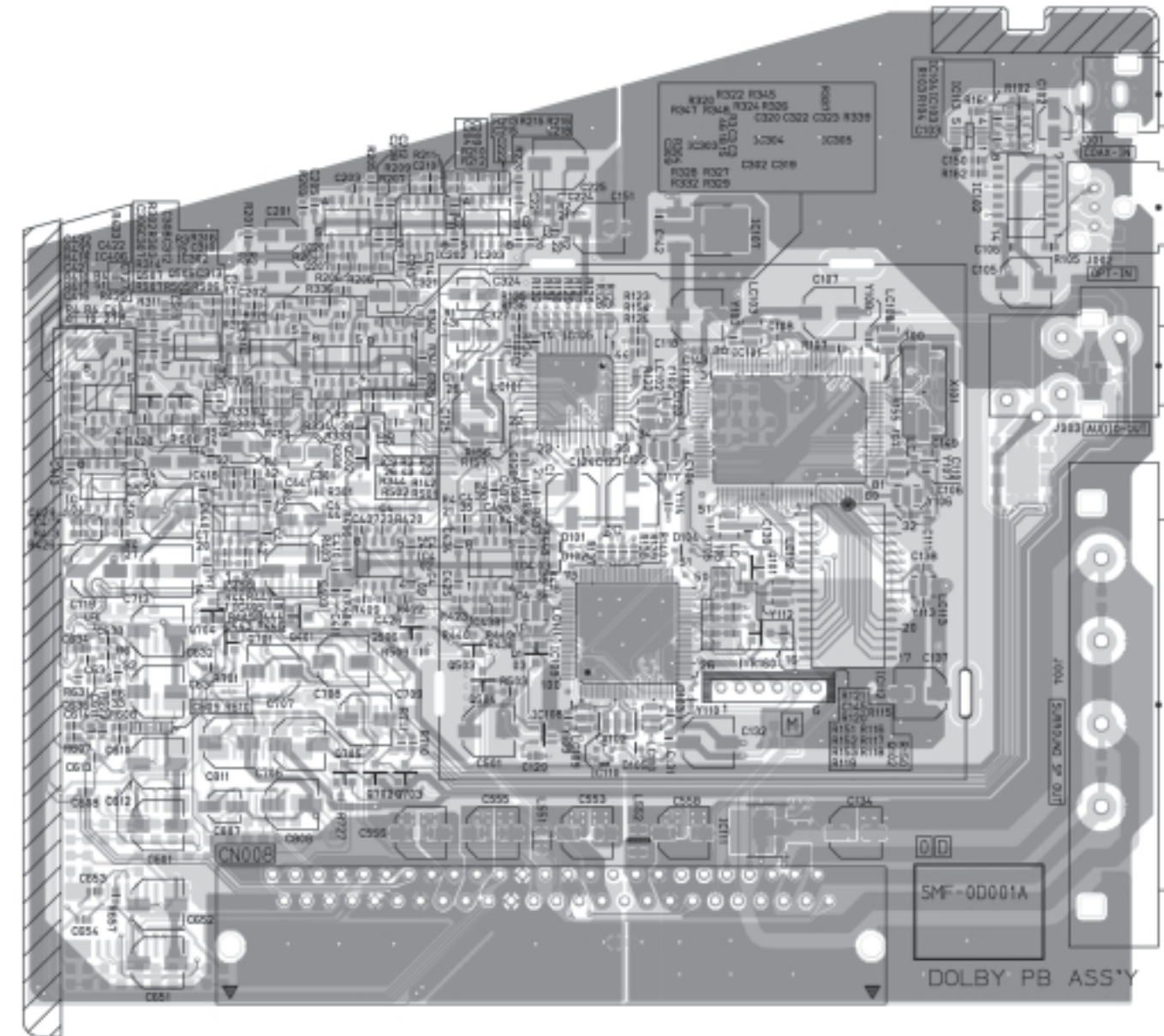
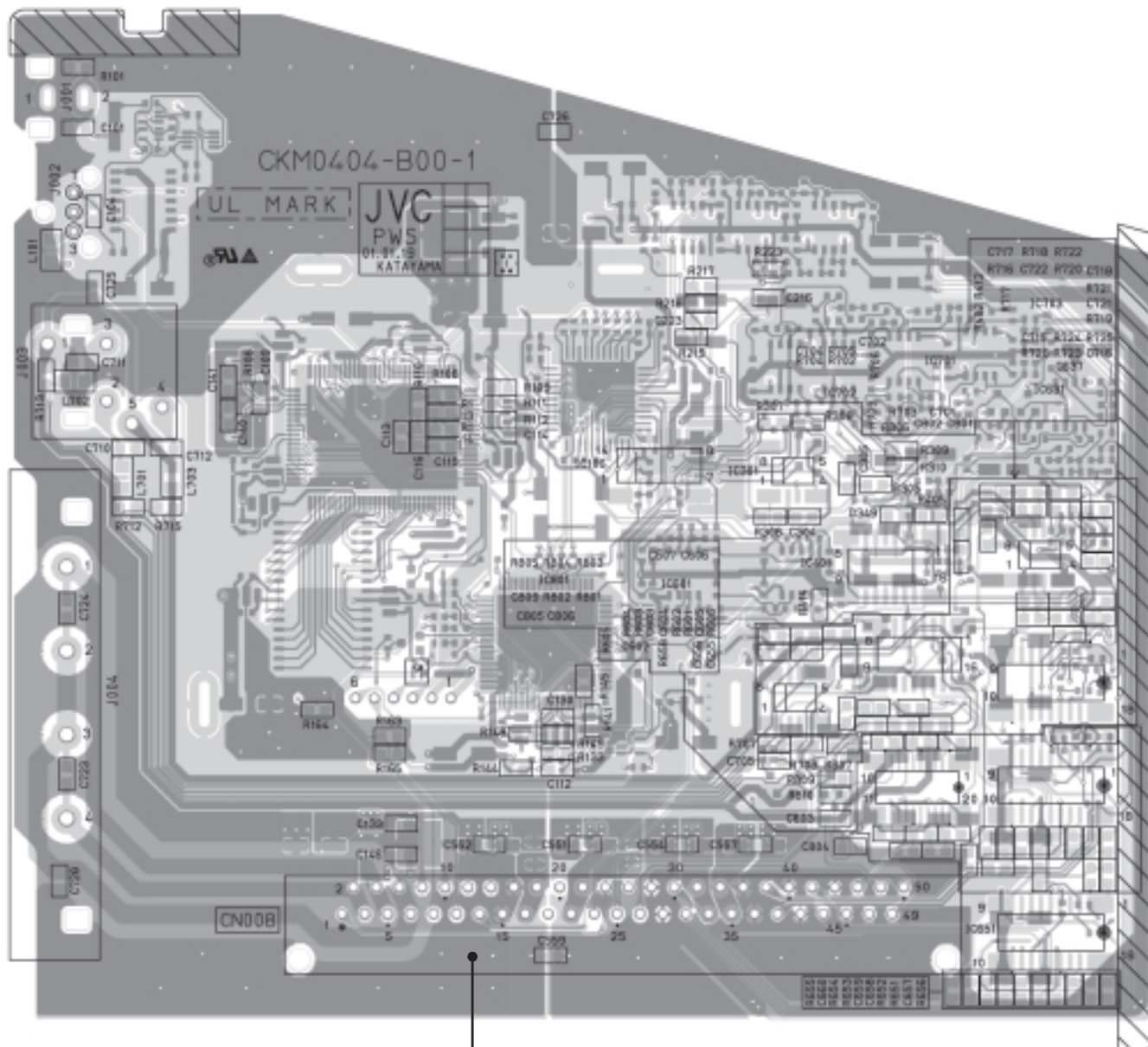


DOLBY PWB PATTERN (SOLDER SIDE)

DOLBY PWB PATTERN (PARTS SIDE)

↑ TOP

↑ TOP



(mm)

CRT SOCKET PWB PATTERN

AV SW PWB PATTERN

